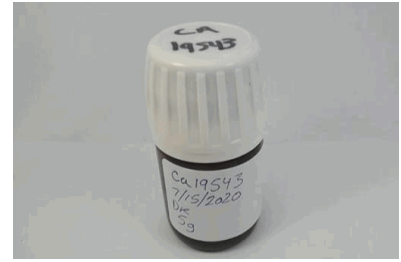


EVIO Labs Medford (pka Kenevir Research)
 540 East Vilas Road, Suite F, Central Point, OR 97502
 541-668-7444 / OLCC 010-1001626980D / www.EVIOLabs.com

CA-19543

Indomira/Green Earth Medicinals

Info Only



Confident Cannabis ID: 2007KR0074.3657

Sample ID: M201118-03

Matrix: Extract/Concentrate

METRC Batch #:

Sampling Method/SOP: Client

Date Sampled: NA

Date Accepted: 07/16/20

Harvest/Process Lot ID:

Batch ID:

Batch Size (g):

Unit for Sale:

Harvest/Production Date:

Cannabinoid Analysis

FOR INFORMATIONAL USE ONLY - NOT FOR REGULATORY PURPOSES

Date/Time Extracted: 07/16/20 09:25

Analysis Method/SOP: SOP.T.40.020

Date/Time Analyzed: 07/16/20 22:15

Cannabinoids	LOQ(%)	mg/g	% weight	Cannabinoid Profile
Total THC ((THCA*0.877)+Δ9THC)		18.70	1.870	
Total CBD ((CBDA*0.877)+CBD)		664.14	66.414	
THCA	0.100	< LOQ	< LOQ	
delta 9-THC	0.100	18.70	1.87	
delta 8-THC	0.100	< LOQ	< LOQ	
THCV	0.100	< LOQ	< LOQ	
CBGA	0.100	< LOQ	< LOQ	
CBDA	0.100	12.70	1.27	
CBD	0.100	653.00	65.3	
CBDV	0.100	3.09	0.309	
CBN	0.100	< LOQ	< LOQ	
CBG	0.100	11.70	1.17	
CBC	0.100	44.10	4.41	
THCV-A	0.100	< LOQ	< LOQ	
CBDV-A	0.100	< LOQ	< LOQ	
CBCA	0.100	< LOQ	< LOQ	
Sum of tested Cannabinoids	0.100	744.00	74.4	

"Total THC" and "Total CBD" are calculated values and are an Oregon reporting requirement (OAR 333-064-0100). For Cannabinoid analysis, only delta 9-THC, THCA, CBD, CBDA are ORELAP accredited analytes. Cannabinoid values reported for plant matter are dry weight corrected; Oregon Water Activity action level is 0.65Aw and Oregon Moisture Content action level is 15%. Samples above limit will be highlighted RED; FD = Field Duplicate; LOQ = Limit of Quantitation.

Stephanie Moon
 Laboratory Director - 7/21/2020

EVIO Labs Medford (pka Kenevir Research)
 540 East Vilas Road, Suite F, Central Point, OR 97502
 541-668-7444 / OLCC 010-1001626980D / www.EVIOLabs.com

FOR INFORMATIONAL USE ONLY - NOT FOR REGULATORY PURPOSES

CA-19543

Indomira/Green Earth Medicinals

Info Only

Sample ID: M201118-03 METRC Batch #:

Matrix: Extract/Concentrate

Date Sampled: NA

Date Accepted: 07/16/20

Batch ID:

Batch Size:

Sampling Method/SOP: Client

Terpene Analysis

Date/Time Extracted: 07/20/20 11:31

Analysis Method/SOP: SOP.T.40.092

Date/Time Analyzed: 07/21/20 10:04

Analyte	LOQ (mg/g)	Mass (mg/g)	Mass (%)	Analyte	LOQ (mg/g)	Mass (mg/g)	Mass (%)
alpha-Pinene	0.500	< LOQ	< LOQ	beta-Pinene	0.500	< LOQ	< LOQ
Camphene	0.500	< LOQ	< LOQ	Sabinene	0.500	< LOQ	< LOQ
Sabinene hydrate	0.500	< LOQ	< LOQ	beta-Myrcene	0.500	< LOQ	< LOQ
p-Mentha-1,5-diene	0.500	< LOQ	< LOQ	(+)-3-Carene	0.500	< LOQ	< LOQ
alpha-Terpinene	0.500	< LOQ	< LOQ	gamma-Terpinene	0.500	< LOQ	< LOQ
Limonene	0.500	< LOQ	< LOQ	Eucalyptol	0.500	< LOQ	< LOQ
Guaiol	0.500	2.77	0.277	Terpinolene	0.500	< LOQ	< LOQ
Linalool	0.500	< LOQ	< LOQ	Camphor	0.500	< LOQ	< LOQ
(+)-Camphor	0.500	< LOQ	< LOQ	(-)-Camphor	0.500	< LOQ	< LOQ
Isopulegol	0.500	< LOQ	< LOQ	Isoborneol	0.500	< LOQ	< LOQ
Borneol	0.500	< LOQ	< LOQ	Hexahydrothymol	0.500	< LOQ	< LOQ
Geraniol	0.500	< LOQ	< LOQ	(+)-Pulegone	0.500	< LOQ	< LOQ
Nerol	0.500	< LOQ	< LOQ	cis-Nerolidol	0.500	< LOQ	< LOQ
trans-Nerolidol	0.500	0.822	0.0822	Geranyl acetate	0.500	< LOQ	< LOQ
alpha-Cedrene	0.500	< LOQ	< LOQ	trans-Caryophyllene	0.500	8.69	0.869
Caryophyllene Oxide	0.500	3.77	0.377	alpha-Humulene	0.500	4.81	0.481
Valencene	0.500	< LOQ	< LOQ	alpha-Farnesene	0.500	< LOQ	< LOQ
beta-Farnesene	0.500	< LOQ	< LOQ	Cedrol	0.500	< LOQ	< LOQ
alpha-Bisabolol	0.500	8.94	0.894	Fenchone	0.500	< LOQ	< LOQ
Fenchyl Alcohol	0.500	< LOQ	< LOQ	trans, beta- Ocimene	0.500	< LOQ	< LOQ
beta, cis- Ocimene	0.500	< LOQ	< LOQ	Terpineol	0.500	0.749	0.0749
Total (Sum):						30.55	3.06

Analysis performed on GCMS with confirmation ion identification. Terpene analysis is not ORELAP accredited. Results reported as wet weight, or as is. LOQ = Limit of Quantitation. Terpene analysis performed in conjunction with EVIO Labs Portland.



Stephanie Moon
 Laboratory Director - 7/21/2020

Page 2 of 3

EVIO Labs Medford (pka Kenevir Research)
 540 East Vilas Road, Suite F, Central Point, OR 97502
 541-668-7444 / OLCC 010-1001626980D / www.EVIOLabs.com

Quality Control

Batch: M20G065 - SOP.T.30.050 Prep for Cannabinoids

Blank(M20G065-BLK1)			Extracted: 07/16/20 09:25		Analyzed: 07/16/20 18:43		
Analyte	Result	LOQ	Recovery Limits	Analyte	Result	LOQ	Recovery Limits
THCA	< LOQ	0.100 (%)	< LOQ	delta 9-THC	< LOQ	0.100 (%)	< LOQ
delta 8-THC	< LOQ	0.100 (%)	< LOQ	THCV-A	< LOQ	0.100 (%)	< LOQ
THCV	< LOQ	0.100 (%)	< LOQ	CBDA	< LOQ	0.100 (%)	< LOQ
CBD	< LOQ	0.100 (%)	< LOQ	CBDV-A	< LOQ	0.100 (%)	< LOQ
CBDV	< LOQ	0.100 (%)	< LOQ	CBG	< LOQ	0.100 (%)	< LOQ
CBGA	< LOQ	0.100 (%)	< LOQ	CBN	< LOQ	0.100 (%)	< LOQ
CBC	< LOQ	0.100 (%)	< LOQ	Sum of tested Cannabinoid:	< LOQ	0.100 (%)	< LOQ

LCS(M20G065-BS1)			Extracted: 07/16/20 09:25		Analyzed: 07/16/20 18:59		
Analyte	% Recovery	LOQ	Recovery Limits	Analyte	% Recovery	LOQ	Recovery Limits
THCA	89.5	(%)	70-130	delta 9-THC	89.7	(%)	70-130
CBDA	88.6	(%)	70-130	CBD	97.6	(%)	70-130

Batch: P20G082 - SOP.T.40.092 PDX Terpene Analysis via GC-MS

Blank(P20G082-BLK1)			Extracted: 07/20/20 11:31		Analyzed: 07/21/20 10:04		
Analyte	Result	LOQ	Recovery Limits	Analyte	Result	LOQ	Recovery Limits
alpha-Pinene	< LOQ	0.200 (mg/g)	< LOQ	beta-Pinene	< LOQ	0.200 (mg/g)	< LOQ
Camphene	< LOQ	0.200 (mg/g)	< LOQ	Sabinene	< LOQ	0.200 (mg/g)	< LOQ
Sabinene hydrate	< LOQ	0.200 (mg/g)	< LOQ	beta-Myrcene	< LOQ	0.200 (mg/g)	< LOQ
p-Mentha-1,5-diene	< LOQ	0.200 (mg/g)	< LOQ	(+)-3-Carene	< LOQ	0.200 (mg/g)	< LOQ
alpha-Terpinene	< LOQ	0.200 (mg/g)	< LOQ	gamma-Terpinene	< LOQ	0.200 (mg/g)	< LOQ
Limonene	< LOQ	0.200 (mg/g)	< LOQ	Eucalyptol	< LOQ	0.200 (mg/g)	< LOQ
Guaiol	< LOQ	0.200 (mg/g)	< LOQ	Terpinolene	< LOQ	0.200 (mg/g)	< LOQ
Linalool	< LOQ	0.200 (mg/g)	< LOQ	Camphor	< LOQ	0.200 (mg/g)	< LOQ
(+)-Camphor	< LOQ	0.200 (mg/g)	< LOQ	(-)-Camphor	< LOQ	0.200 (mg/g)	< LOQ
Isopulegol	< LOQ	0.200 (mg/g)	< LOQ	Isoborneol	< LOQ	0.200 (mg/g)	< LOQ
Borneol	< LOQ	0.200 (mg/g)	< LOQ	Hexahydrothymol	< LOQ	0.200 (mg/g)	< LOQ
Geraniol	< LOQ	0.200 (mg/g)	< LOQ	(+)-Pulegone	< LOQ	0.200 (mg/g)	< LOQ
Nerol	< LOQ	0.200 (mg/g)	< LOQ	cis-Nerolidol	< LOQ	0.200 (mg/g)	< LOQ
trans-Nerolidol	< LOQ	0.200 (mg/g)	< LOQ	Geranyl acetate	< LOQ	0.200 (mg/g)	< LOQ
alpha-Cedrene	< LOQ	0.200 (mg/g)	< LOQ	trans-Caryophyllene	< LOQ	0.200 (mg/g)	< LOQ
Caryophyllene Oxide	< LOQ	0.200 (mg/g)	< LOQ	alpha-Humulene	< LOQ	0.200 (mg/g)	< LOQ
Valencene	< LOQ	0.200 (mg/g)	< LOQ	alpha-Farnesene	< LOQ	0.200 (mg/g)	< LOQ
beta-Farnesene	< LOQ	0.200 (mg/g)	< LOQ	Cedrol	< LOQ	0.200 (mg/g)	< LOQ
alpha-Bisabolol	< LOQ	0.200 (mg/g)	< LOQ	Fenchone	< LOQ	0.200 (mg/g)	< LOQ
Fenchyl Alcohol	< LOQ	0.200 (mg/g)	< LOQ	trans, beta- Ocimene	< LOQ	0.200 (mg/g)	< LOQ
beta, cis- Ocimene	< LOQ	0.200 (mg/g)	< LOQ	Terpineol	< LOQ	0.200 (mg/g)	< LOQ



Stephanie Moon
 Laboratory Director - 7/21/2020