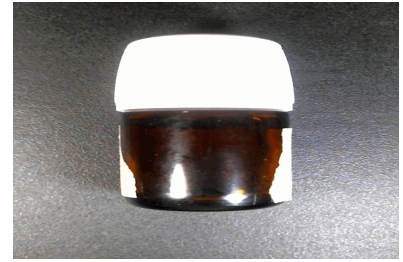


EVIO Labs Medford (pka Kenevir Research)  
 540 East Vilas Road, Suite F, Central Point, OR 97502  
 541-668-7444 / OLCC 010-1001626980D / www.EVIOLabs.com

**RDC-195001**  
*Rogue Naturals*  
*Informational Use Only Testing*



**Confident Cannabis ID:** 1901KR0051.0143  
**Sample ID:** M190052-02  
**Matrix:** Cannabinoid Product (liquid)  
**METRC Batch #:**  
**Batch ID:**  
**Sampling Method/SOP:** SOP.T.20.010  
**Batch Size (g):**  
**Date Sampled:** 01/14/19 09:45  
**Unit for Sale:**  
**Date Accepted:** 01/14/19  
**Harvest/Production Date:**  
**Harvest/Process Lot ID:**

## Cannabinoid Analysis

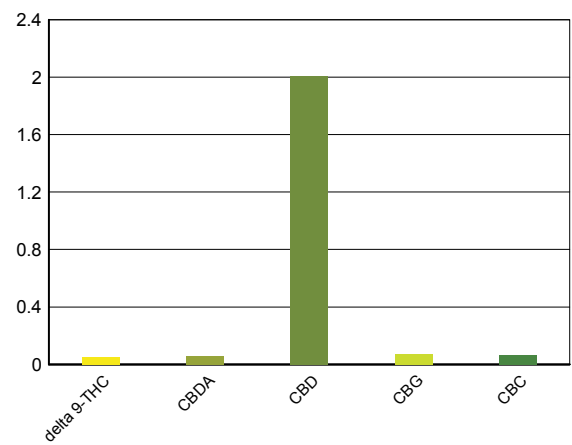
**FOR INFORMATIONAL USE ONLY - NOT FOR REGULATORY PURPOSES**

Date/Time Extracted: 01/15/19 15:15  
 Date/Time Analyzed: 01/15/19 19:32


Analysis Method/SOP: SOP.T.40.020  
 Sample mass: 0.95g / mL

Cannabinoids	LOQ(%)	mg/g	mg/mL	Cannabinoid Profile
<b>Total THC</b> ((THCA*0.877)+Δ9THC)		<b>0.481</b>	<b>0.457</b>	
<b>Total CBD</b> ((CBDA*0.877)+CBD)		<b>20.64</b>	<b>19.6</b>	

THCA	0.0100	< LOQ	< LOQ
delta 9-THC	0.0100	0.481	0.457
delta 8-THC	0.0100	< LOQ	< LOQ
CBDA	0.0100	0.606	0.576
CBD	0.0100	20.11	19.1
CBN	0.0100	< LOQ	< LOQ
CBG	0.0100	0.735	0.698
CBC	0.0100	0.651	0.618
Sum of tested Cannabinoids	0.0100	22.58	21.5



"Total THC" and "Total CBD" are calculated values and are an Oregon reporting requirement (OAR 333-064-0100). For Cannabinoid analysis, only delta 9-THC, THCA, CBD, CBDA are ORELAP accredited analytes. Cannabinoid values reported for plant matter are dry weight corrected; Oregon Water Activity action level is 0.65Aw and Oregon Moisture Content action level is 15%. Samples above limit will be highlighted RED; FD = Field Duplicate; LOQ = Limit of Quantitation.

  
 Ian Riversong  
 Laboratory Director - 1/17/2019

EVIO Labs Medford (pka Kenevir Research)  
 540 East Vilas Road, Suite F, Central Point, OR 97502  
 541-668-7444 / OLCC 010-1001626980D / www.EVIOLabs.com

**FOR INFORMATIONAL USE ONLY - NOT FOR REGULATORY PURPOSES**

**RDC-195001**

Rogue Naturals

Informational Use Only Testing

Sample ID: M190052-02

METRC Batch #:

Matrix: Cannabinoid Product

Date Sampled: 01/14/19 09:45

Date Accepted: 01/14/19

Batch ID:

Batch Size:

Sampling Method/SOP: SOP.T.20.010

## Yeast and Mold Enumeration

Date/Time Extracted: 01/15/19 11:44

Analysis Method/SOP: SOP.T.40.040

Date/Time Analyzed: 01/17/19 11:47

Total Colonies: 0.00 CFU/g

### About Your Yeast and Mold Results

Botanical materials often have total yeast and mold counts between 1,500 - 7,500 CFU/g. Products that have undergone exposure to solvents, such as alcohol tinctures or concentrated materials extracted with butane, propane, hexane, carbon dioxide, or other organic solvents will typically feature total yeast and mold counts at 0 CFU/g.

The American Herbal Pharmacopoeia recommends herbal products contain no greater than 10,000 CFU/g of total yeasts and molds. Results above 10,000 CFU/g will be highlighted **Red**.

### Yeasts vs Molds

Yeasts and molds are both broad types of fungi. Yeasts are unicellular and reproduce by budding, creating a small smooth appearance, whereas molds are multicellular and grow through fungal strands called hyphae, creating a fuzzy appearance often associated with mold.

Yeasts and molds are commonly found on natural products, and not all are harmful. Nevertheless, yeasts and molds, as well as their spores, can cause lung irritation, facilitate allergic reactions, or even present life-threatening conditions for immuno-compromised consumers. For instance, the dark mold, *Aspergillus*, can produce toxic chemical byproducts which can be harmful to human health. *Aspergillus* spores can lodge in small crevices in the lungs and grow, leading to a potentially life-threatening condition called Aspergillosis.

A simple total yeast and mold count can be a great way to monitor for potential health hazards in botanical products and help ensure the safety of consumers.



Ian Riversong  
 Laboratory Director - 1/17/2019

Page 2 of 4

EVIO Labs Medford (pka Kenevir Research)  
540 East Vilas Road, Suite F, Central Point, OR 97502  
541-668-7444 / OLCC 010-1001626980D / www.EVIOLabs.com

**FOR INFORMATIONAL USE ONLY - NOT FOR REGULATORY PURPOSES**

## RDC-195001

Rogue Naturals

Informational Use Only Testing

Sample ID: M190052-02

METRC Batch #:

Matrix: Cannabinoid Product

Date Sampled: 01/14/19 09:45

Date Accepted: 01/14/19

Batch ID:

Batch Size:

Sampling Method/SOP: SOP.T.20.010

### Aerobic Plate Count

Date/Time Extracted: 01/15/19 11:45

Analysis Method/SOP: SOP.T.40.000

Date/Time Analyzed: 01/17/19 11:47

**Total Colonies:** 0.00 **CFU/g**

#### About Your Aerobic Plate Count (APC) Results

An aerobic plate count is a measure of the amount of bacteria in a sample that is capable of living in an oxygenated environment.

The American Herbal Pharmacopoeia recommends herbal products contain no greater than 100,000 CFU/g of total viable aerobic bacteria. For CO<sub>2</sub> and solvent based extracts, the AHP recommends a limit of no greater than 10,000 CFU/g.

Aerobic plate count is commonly applied to finish products, particularly foods. Traditionally manufacturers will monitor products for aerobic bacteria on a routine basis to ensure that the microbial load of a product is not increasing.



Ian Riversong  
Laboratory Director - 1/17/2019

Page 3 of 4

**EVIO Labs Medford (pka Kenevir Research)**  
**540 East Vilas Road, Suite F, Central Point, OR 97502**  
**541-668-7444 / OLCC 010-1001626980D / www.EVIOLabs.com**

## Quality Control

**Batch: M19A057 - SOP.T.30.050 Prep for Cannabinoids**

<b>Blank(M19A057-BLK1)</b>			<b>Extracted: 01/15/19 15:15</b>		<b>Analyzed: 01/15/19 16:38</b>		
<b>Analyte</b>	<b>Result</b>	<b>LOQ</b>	<b>Recovery Limits</b>	<b>Analyte</b>	<b>Result</b>	<b>LOQ</b>	<b>Recovery Limits</b>
THCA	< LOQ	0.0100 (%)	< LOQ	delta 9-THC	< LOQ	0.0100 (%)	< LOQ
delta 8-THC	< LOQ	0.0100 (%)	< LOQ	CBDA	< LOQ	0.0100 (%)	< LOQ
CBD	< LOQ	0.0100 (%)	< LOQ	CBG	< LOQ	0.0100 (%)	< LOQ
CBN	< LOQ	0.0100 (%)	< LOQ	CBC	< LOQ	0.0100 (%)	< LOQ
Sum of tested Cannabinoid:	< LOQ	0.0100 (%)	< LOQ				

<b>LCS(M19A057-BS1)</b>			<b>Extracted: 01/15/19 15:15</b>		<b>Analyzed: 01/15/19 16:56</b>		
<b>Analyte</b>	<b>% Recovery</b>	<b>LOQ</b>	<b>Recovery Limits</b>	<b>Analyte</b>	<b>% Recovery</b>	<b>LOQ</b>	<b>Recovery Limits</b>
THCA	98.3	(%)	70-130	delta 9-THC	101	(%)	70-130
CBDA	104	(%)	70-130	CBD	106	(%)	70-130



**Ian Riversong**  
**Laboratory Director - 1/17/2019**