

EVIO Labs Medford (pka Kenevir Research)
 540 East Vilas Road, Suite F, Central Point, OR 97502
 541-668-7444 / OLCC 010-1001626980D / www.EVIOLabs.com

Regular Strength Oral Formula- A1

Rogue Naturals

AG-R1043473IHH (OHA)



Confident Cannabis ID: 1902KR0009.0360

Sample ID: M190144-01

Matrix: Cannabinoid Product (liquid)

METRC Batch #:

Batch ID: RDC-19501

Sampling Method/SOP: SOP.T.20.010

Batch Size (g): 1300 units

Date Sampled: 02/05/19 10:30

Unit for Sale: 1 and 2 oz Bottles

Date Accepted: 02/05/19

Harvest/Production Date:

Harvest/Process Lot ID: 6496IHH-RDC1901

Cannabinoid Analysis

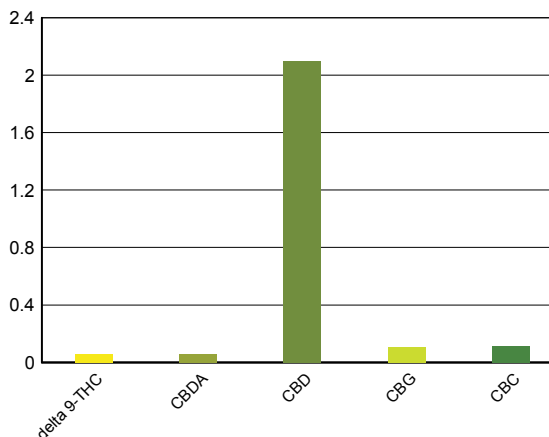
Date/Time Extracted: 02/06/19 13:58

Analysis Method/SOP: SOP.T.40.020

Date/Time Analyzed: 02/06/19 17:30

Cannabinoids	LOQ(%)	mg/g	% weight	Cannabinoid Profile
Total THC <small>((THCA*0.877)+Δ9THC)</small>		0.583	0.0583	
Total CBD <small>((CBDA*0.877)+CBD)</small>		21.49	2.149	

THCA	0.0100	< LOQ	< LOQ
delta 9-THC	0.0100	0.583	0.0583
delta 8-THC	0.0100	< LOQ	< LOQ
CBDA	0.0100	0.603	0.0603
CBD	0.0100	20.96	2.096
CBN	0.0100	< LOQ	< LOQ
CBG	0.0100	1.078	0.1078
CBC	0.0100	1.118	0.1118
Sum of tested Cannabinoids	0.0100	24.34	2.434



"Total THC" and "Total CBD" are calculated values and are an Oregon reporting requirement (OAR 333-064-0100). For Cannabinoid analysis, only delta 9-THC, THCA, CBD, CBDA are ORELAP accredited analytes. Cannabinoid values reported for plant matter are dry weight corrected; Oregon Water Activity action level is 0.65Aw and Oregon Moisture Content action level is 15%. Samples above limit will be highlighted RED; FD = Field Duplicate; LOQ = Limit of Quantitation.

Ian Riversong
 Laboratory Director - 2/8/2019

Page 1 of 2

EVIO Labs Medford (pka Kenevir Research)
540 East Vilas Road, Suite F, Central Point, OR 97502
541-668-7444 / OLCC 010-1001626980D / www.EVIOLabs.com

Quality Control

Batch: M19B020 - SOP.T.30.050 Prep for Cannabinoids

Blank(M19B020-BLK1)			Extracted: 02/06/19 13:58		Analyzed: 02/06/19 16:03		
Analyte	Result	LOQ	Recovery Limits	Analyte	Result	LOQ	Recovery Limits
THCA	< LOQ	0.0100 (%)	< LOQ	delta 9-THC	< LOQ	0.0100 (%)	< LOQ
delta 8-THC	< LOQ	0.0100 (%)	< LOQ	CBDA	< LOQ	0.0100 (%)	< LOQ
CBD	< LOQ	0.0100 (%)	< LOQ	CBG	< LOQ	0.0100 (%)	< LOQ
CBN	< LOQ	0.0100 (%)	< LOQ	CBC	< LOQ	0.0100 (%)	< LOQ
Sum of tested Cannabinoid:	< LOQ	0.0100 (%)	< LOQ				

LCS(M19B020-BS1)			Extracted: 02/06/19 13:58		Analyzed: 02/06/19 16:21		
Analyte	% Recovery	LOQ	Recovery Limits	Analyte	% Recovery	LOQ	Recovery Limits
THCA	113	(%)	70-130	delta 9-THC	115	(%)	70-130
CBDA	112	(%)	70-130	CBD	113	(%)	70-130



Ian Riversong
Laboratory Director - 2/8/2019