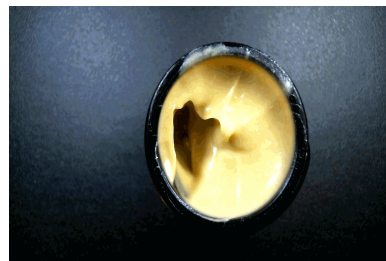


EVIO Labs Medford (pka Kenevir Research)
 540 East Vilas Road, Suite F, Central Point, OR 97502
 541-668-7444 / OLCC 010-1001626980D / www.EVIOLabs.com

Topical Relief Cream- TCC-19511

Rogue Naturals

AG-R1043473IHH (OHA)



Confident Cannabis ID: 1902KR0089.0628

Sample ID: M190216-02

Matrix: Cannabinoid Product (solid)

METRC Batch #:

Batch ID: TCC-19511

Sampling Method/SOP: SOP.T.20.010

Batch Size (g): 500 units

Date Sampled: 02/21/19 10:30

Unit for Sale: 1oz/2oz

Date Accepted: 02/21/19

Harvest/Production Date: 2/14/19

Harvest/Process Lot ID: 64961HH- TCC1905

Cannabinoid Analysis

Date/Time Extracted: 02/26/19 11:27

Analysis Method/SOP: SOP.T.40.020

Date/Time Analyzed: 02/26/19 16:24

Cannabinoids	LOQ(%)	mg/g	% weight	Cannabinoid Profile
Total THC ((THCA*0.877)+Δ9THC)		0.241	0.0241	
Total CBD ((CBDA*0.877)+CBD)		5.215	0.5215	
THCA	0.0100	< LOQ	< LOQ	
delta 9-THC	0.0100	0.187	0.0187	
delta 8-THC	0.0100	< LOQ	< LOQ	
CBDA	0.0100	< LOQ	< LOQ	
CBD	0.0100	5.168	0.5168	
CBN	0.0100	< LOQ	< LOQ	
CBG	0.0100	0.903	0.0903	
CBC	0.0100	< LOQ	< LOQ	
Sum of tested Cannabinoids	0.0100	6.453	0.6453	

"Total THC" and "Total CBD" are calculated values and are an Oregon reporting requirement (OAR 333-064-0100). For Cannabinoid analysis, only delta 9-THC, THCA, CBD, CBDA are ORELAP accredited analytes. Cannabinoid values reported for plant matter are dry weight corrected; Oregon Water Activity action level is 0.65Aw and Oregon Moisture Content action level is 15%. Samples above limit will be highlighted RED; FD = Field Duplicate; LOQ = Limit of Quantitation.

Ian Riversong
 Laboratory Director - 3/5/2019

EVIO Labs Medford (pka Kenevir Research)
 540 East Vilas Road, Suite F, Central Point, OR 97502
 541-668-7444 / OLCC 010-1001626980D / www.EVIOLabs.com

Quality Control

Batch: M19B092 - SOP.T.30.050 Prep for Cannabinoids

Blank(M19B092-BLK1)			Extracted: 02/26/19 11:27		Analyzed: 02/26/19 15:15		
Analyte	Result	LOQ	Recovery Limits	Analyte	Result	LOQ	Recovery Limits
THCA	< LOQ	0.0100 (%)	< LOQ	delta 9-THC	< LOQ	0.0100 (%)	< LOQ
delta 8-THC	< LOQ	0.0100 (%)	< LOQ	CBDA	< LOQ	0.0100 (%)	< LOQ
CBD	< LOQ	0.0100 (%)	< LOQ	CBG	< LOQ	0.0100 (%)	< LOQ
CBN	< LOQ	0.0100 (%)	< LOQ	CBC	< LOQ	0.0100 (%)	< LOQ
Sum of tested Cannabinoid:	< LOQ	0.0100 (%)	< LOQ				

LCS(M19B092-BS1)			Extracted: 02/26/19 11:27		Analyzed: 02/26/19 15:32		
Analyte	% Recovery	LOQ	Recovery Limits	Analyte	% Recovery	LOQ	Recovery Limits
THCA	103	(%)	70-130	delta 9-THC	104	(%)	70-130
CBDA	102	(%)	70-130	CBD	104	(%)	70-130



Ian Riversong
 Laboratory Director - 3/5/2019