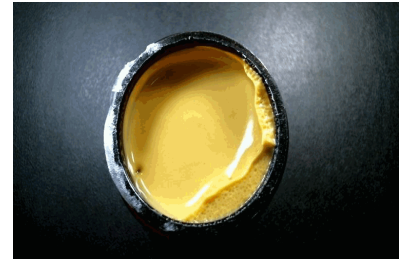


EVIO Labs Medford (pka Kenevir Research)
 540 East Vilas Road, Suite F, Central Point, OR 97502
 541-668-7444 / OLCC 010-1001626980D / www.EVIOLabs.com

Topical Relief Cream TCC-19534

Rogue Naturals
 AG-R1056496IHH (ODA)



Confident Cannabis ID: 1908KR0068.3287

Sample ID: M190999-22

Matrix: Cannabinoid Product (liquid)

METRC Batch #:

Sampling Method/SOP: SOP.T.20.010

Date Sampled: 08/12/19 09:00

Date Accepted: 08/12/19

Harvest/Process Lot ID: 6496IHH-TCC1927

Batch ID: TCC-19534

Batch Size (g):

Unit for Sale: 1oz,2oz

Harvest/Production Date: 6-11-19

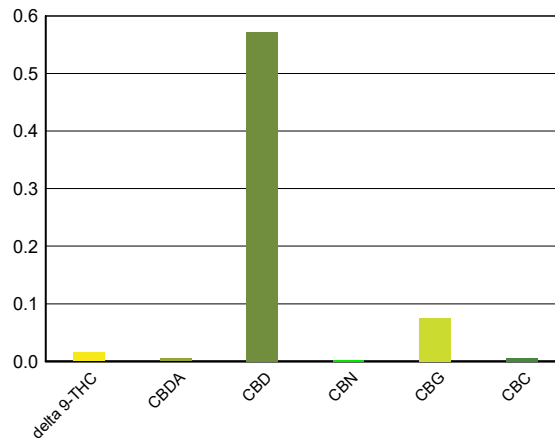
Cannabinoid Analysis

Date/Time Extracted: 08/13/19 16:30
 Date/Time Analyzed: 08/13/19 23:11

Analysis Method/SOP: SOP.T.40.020

Cannabinoids	LOQ(%)	mg/g	% weight	Cannabinoid Profile
Total THC ((THCA*0.877)+Δ9THC)		0.154	0.0154	
Total CBD ((CBDA*0.877)+CBD)		5.771	0.5771	

THCA	0.0050	< LOQ	< LOQ
delta 9-THC	0.0050	0.154	0.0154
delta 8-THC	0.0050	< LOQ	< LOQ
CBDA	0.0050	< LOQ	< LOQ
CBD	0.0050	5.729	0.5729
CBN	0.0050	< LOQ	< LOQ
CBG	0.0050	0.749	0.0749
CBC	0.0050	0.058	0.0058
Sum of tested Cannabinoids	0.0050	6.757	0.6757



"Total THC" and "Total CBD" are calculated values and are an Oregon reporting requirement (OAR 333-064-0100). For Cannabinoid analysis, only delta 9-THC, THCA, CBD, CBDA are ORELAP accredited analytes. Cannabinoid values reported for plant matter are dry weight corrected; Oregon Water Activity action level is 0.65Aw and Oregon Moisture Content action level is 15%. Samples above limit will be highlighted RED; FD = Field Duplicate; LOQ = Limit of Quantitation.

Ian Riversong
 Laboratory Director - 8/19/2019

EVIO Labs Medford (pka Kenevir Research)
 540 East Vilas Road, Suite F, Central Point, OR 97502
 541-668-7444 / OLCC 010-1001626980D / www.EVIOLabs.com

Quality Control

Batch: M19H069 - SOP.T.30.050 Prep for Cannabinoids

Blank(M19H069-BLK1)			Extracted: 08/13/19 16:30		Analyzed: 08/13/19 18:15		
Analyte	Result	LOQ	Recovery Limits	Analyte	Result	LOQ	Recovery Limits
THCA	< LOQ	0.0100 (%)	< LOQ	delta 9-THC	< LOQ	0.0100 (%)	< LOQ
delta 8-THC	< LOQ	0.0100 (%)	< LOQ	CBDA	< LOQ	0.0100 (%)	< LOQ
CBD	< LOQ	0.0100 (%)	< LOQ	CBG	< LOQ	0.0100 (%)	< LOQ
CBN	< LOQ	0.0100 (%)	< LOQ	CBC	< LOQ	0.0100 (%)	< LOQ
Sum of tested Cannabinoid:	< LOQ	0.0100 (%)	< LOQ				

LCS(M19H069-BS1)			Extracted: 08/13/19 16:30		Analyzed: 08/13/19 18:33		
Analyte	% Recovery	LOQ	Recovery Limits	Analyte	% Recovery	LOQ	Recovery Limits
THCA	99.7	(%)	70-130	delta 9-THC	99.2	(%)	70-130
CBDA	103	(%)	70-130	CBD	102	(%)	70-130



Ian Riversong
 Laboratory Director - 8/19/2019