

EVIO Labs Medford (pka Kenevir Research)
 540 East Vilas Road, Suite F, Central Point, OR 97502
 541-668-7444 / OLCC 010-1001626980D / www.EVIOLabs.com

Topical Relief Cream TCC-19546

Rogue Naturals

AG-R1056496IHH (ODA)



Confident Cannabis ID: 1908KR0126.3563

Sample ID: M191058-03

Matrix: Cannabinoid Product (liquid)

METRC Batch #:

Sampling Method/SOP: SOP.T.20.010

Date Sampled: 08/21/19 09:00

Date Accepted: 08/21/19

Harvest/Process Lot ID: 6496IHH-TCC1939

Batch ID: TCC-19546

Batch Size (g): 18280g

Unit for Sale: 1oz.2oz

Harvest/Production Date: 8-12-19

Cannabinoid Analysis

Date/Time Extracted: 09/06/19 15:22

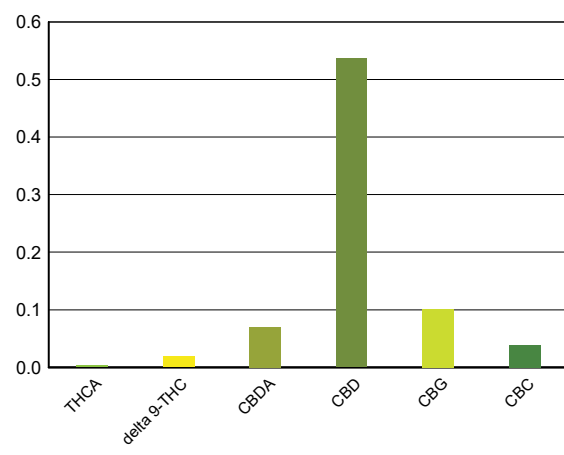
Date/Time Analyzed: 09/09/19 12:33

Analysis Method/SOP: SOP.T.40.020

| Cannabinoids | LOQ(%) | mg/g | % weight | Cannabinoid Profile |
|--------------|--------|------|----------|---------------------|
|--------------|--------|------|----------|---------------------|

| | | | | |
|---------------------------------------|--|-------------|--------------|--|
| Total THC ((THCA*0.877)+Δ9THC) | | 0.18 | 0.018 | |
| Total CBD ((CBDA*0.877)+CBD) | | 5.98 | 0.598 | |

| | | | |
|-------------------------------|--------|-------|--------|
| THCA | 0.0050 | < LOQ | < LOQ |
| delta 9-THC | 0.0050 | 0.18 | 0.0184 |
| CBGA | 0.0050 | < LOQ | < LOQ |
| CBDA | 0.0050 | 0.70 | 0.0699 |
| CBD | 0.0050 | 5.37 | 0.5366 |
| CBDV | 0.0050 | < LOQ | < LOQ |
| CBN | 0.0050 | < LOQ | < LOQ |
| CBG | 0.0050 | 1.02 | 0.1021 |
| CBC | 0.0050 | 0.38 | 0.0381 |
| CBDV-A | 0.0050 | < LOQ | < LOQ |
| Sum of tested Cannabinoids | 0.0050 | < LOQ | < LOQ |



"Total THC" and "Total CBD" are calculated values and are an Oregon reporting requirement (OAR 333-064-0100). For Cannabinoid analysis, only delta 9-THC, THCA, CBD, CBDA are ORELAP accredited analytes. Cannabinoid values reported for plant matter are dry weight corrected; Oregon Water Activity action level is 0.65Aw and Oregon Moisture Content action level is 15%. Samples above limit will be highlighted RED; FD = Field Duplicate; LOQ = Limit of Quantitation.

Stephanie Moon
 Laboratory Director - 9/18/2019

EVIO Labs Medford (pka Kenevir Research)
 540 East Vilas Road, Suite F, Central Point, OR 97502
 541-668-7444 / OLCC 010-1001626980D / www.EVIOLabs.com

FOR INFORMATIONAL USE ONLY - NOT FOR REGULATORY PURPOSES

Topical Relief Cream TCC-19546

Rogue Naturals

AG-R1056496IHH (ODA)

Sample ID: M191058-03

METRC Batch #:

Matrix: Cannabinoid Product

Date Sampled: 08/21/19 09:00

Date Accepted: 08/21/19

Batch ID: TCC-19546

Batch Size: 18280g

Sampling Method/SOP: SOP.T.20.010

Yeast and Mold Enumeration

Date/Time Extracted: 08/26/19 10:52

Analysis Method/SOP: *** DEFAULT
SPECIFIC

Date/Time Analyzed: 08/28/19 15:29

Total Colonies: 0.00 CFU/g

About Your Yeast and Mold Results

Botanical materials often have total yeast and mold counts between 1,500 - 7,500 CFU/g. Products that have undergone exposure to solvents, such as alcohol tinctures or concentrated materials extracted with butane, propane, hexane, carbon dioxide, or other organic solvents will typically feature total yeast and mold counts at 0 CFU/g.

The American Herbal Pharmacopoeia recommends herbal products contain no greater than 10,000 CFU/g of total yeasts and molds. Results above 10,000 CFU/g will be highlighted **Red**.

Yeasts vs Molds

Yeasts and molds are both broad types of fungi. Yeasts are unicellular and reproduce by budding, creating a small smooth appearance, whereas molds are multicellular and grow through fungal strands called hyphae, creating a fuzzy appearance often associated with mold.

Yeasts and molds are commonly found on natural products, and not all are harmful. Nevertheless, yeasts and molds, as well as their spores, can cause lung irritation, facilitate allergic reactions, or even present life-threatening conditions for immuno-compromised consumers. For instance, the dark mold, *Aspergillus*, can produce toxic chemical byproducts which can be harmful to human health. *Aspergillus* spores can lodge in small crevices in the lungs and grow, leading to a potentially life-threatening condition called Aspergillosis.

A simple total yeast and mold count can be a great way to monitor for potential health hazards in botanical products and help ensure the safety of consumers.



Stephanie Moon
 Laboratory Director - 9/18/2019

EVIO Labs Medford (pka Kenevir Research)
 540 East Vilas Road, Suite F, Central Point, OR 97502
 541-668-7444 / OLCC 010-1001626980D / www.EVIOLabs.com

Quality Control

Batch: M19I025 - SOP.T.30.050 Prep for Cannabinoids

| Blank(M19I025-BLK1) | | | Extracted: 09/06/19 15:22 | | Analyzed: 09/09/19 07:03 | | |
|----------------------------|--------|------------|---------------------------|-------------|--------------------------|------------|-----------------|
| Analyte | Result | LOQ | Recovery Limits | Analyte | Result | LOQ | Recovery Limits |
| THCA | < LOQ | 0.0050 (%) | < LOQ | delta 9-THC | < LOQ | 0.0050 (%) | < LOQ |
| delta 8-THC | < LOQ | 0.0050 (%) | < LOQ | CBDA | < LOQ | 0.0050 (%) | < LOQ |
| CBD | < LOQ | 0.0050 (%) | < LOQ | CBG | < LOQ | 0.0050 (%) | < LOQ |
| CBN | < LOQ | 0.0050 (%) | < LOQ | CBC | < LOQ | 0.0050 (%) | < LOQ |
| Sum of tested Cannabinoid: | < LOQ | 0.0050 (%) | < LOQ | | | | |

| LCS(M19I025-BS1) | | | Extracted: 09/06/19 15:22 | | Analyzed: 09/09/19 07:20 | | |
|------------------|------------|-----|---------------------------|-------------|--------------------------|-----|-----------------|
| Analyte | % Recovery | LOQ | Recovery Limits | Analyte | % Recovery | LOQ | Recovery Limits |
| THCA | 84.5 | (%) | 70-130 | delta 9-THC | 85.2 | (%) | 70-130 |
| CBDA | 84.8 | (%) | 70-130 | CBD | 86.3 | (%) | 70-130 |



Stephanie Moon
 Laboratory Director - 9/18/2019